

ConCertino 2015

The Twenty-Fifth Floating Northeast Filk Music Convention

June 19-21, 2015

Guests of Honor

Summer and Fall

Eva van Daele-Hunt and Christine (Crystal) Blum

Toastmaster

Rand Bellavia

LinGuest

Mark Mandel

Interfilk Guest

Kari Maaren

**Concerts, workshops, song contest, open filks, food,
friends, fun, and singing late into the night!**

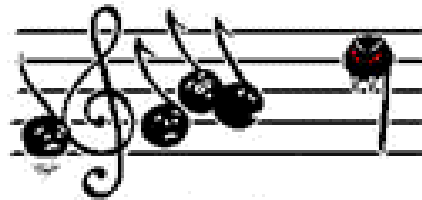
ConCertino Returns to:

The Holiday Inn, Boxborough, MA, Phone 978-263-8701

ConCertino room rate **\$109.00** + tax (1-4 people/room/night)



www.concertino.net



MASSFILC

Our Guests of Honor

Eva and Christine have been making music together as Summer and Fall since 2001. In English and German, on guitar, flute, recorder, mandolin, Summer and Fall will carry you on a journey through myths and legends, stories and dreams. Eva has been nominated for several Pegasus Awards, twice for Best Writer/Composer as well as for her songs "Die Puppen", "Stimmen im Wind", and "Rain on Berlin". This is Eva and Crystal's third guest spot at a U.S. convention; they were GAFilk's Interfilk guests in 2007 and Consonance's International Guests in 2008. The ConCertino 2015 Con Com is delighted to welcome them to the Northeast.

Toastmaster

Rand Bellavia is one half of the superhero (and occasionally supervillain) songwriting and performing duo Rand and Adam, better known to the world as Ookla the Mok. Together with Adam English, Rand is the proud owner of four Pegasus Awards: Best Classic Song in 2012 for "Tiberius Rising", Best Comic Book Song in 2004 for "Arthur Curry", Best Performer in 2004 (as Ookla the Mok), and Best Writer/Composer in 1997. When not at conventions, our favorite Library Man can be found at D'Youville College where he is Director of the Montante Family Library or teaching Library Science at the University of Buffalo.

LinGuest

Mark Mandel had been filking for over 40 years before officially becoming a filker when Lois Mangan dragged him ~~kicking and screaming~~ punning and singing into MASSFILK. Mark was an Interfilk Guest at Consonance in 2003. Mark retired from the Linguistic Data Consortium of the University of Pennsylvania in 2013, but continues to blog about odd and interesting languages, vocabulary, and other linguistic trivia. (You see why he is ConCertino's "LinGuest".) Mark often totes a small can he uses to collect "pun fines", which are donated to Interfilk.

Interfilk Guest

Our Interfilk Guest is Kari Maaren, one of a "waddle" of up-and-coming, talented writers and performers of geeky songs in the greater Toronto area, and a regular at FilKONtario, SFContario, and other local events. Wielding a ukulele, Kari sings of vampires, elves, Sherlock Holmes, and many other aspects of geek culture. Kari won a 2013 Prix Aurora Award in the Fan Filk category and was nominated in the Graphic Novel category for her *West of Bathurst*. She will be arriving at ConCertino fresh off a turn as FilKONtario 25's Filk Waif.

Memberships

Pre-Reg Memberships are US \$55 until June 1, 2015 and will be \$65 at the door. Premier Memberships are \$125, and will include special recognition and extras. Children 6 and under (in-tow) are free, Children 7-12 (inclusive) are \$15, and Children/Young Adults 13-24 (inclusive) are \$40. Children 12 and under do not receive publications. Supporting memberships are \$20, include copies of the progress report and program book, and can be converted to attending by paying the difference in price. A registration form can be found on the ConCertino website, as well as a PayPal link. (Note PayPal may charge a small transaction fee.)

For members from outside the US who don't normally have US dollars on hand, ConCertino will allow you to get a membership at the pre-registration rate, and then pay that rate in US dollars at the Con. Just print out and fill in the registration form and mail it to the address listed by the pre-registration deadline. Please remember that this is a firm commitment to come to the Con.

The Hotel

ConCertino 2015 returns to the Holiday Inn in Boxborough, MA. The address is 242 Adams Place, Boxborough, MA 01719. The phone number is 978-263-8701. The room rate is US \$109/night (plus tax) for 1 to 4 people. When making reservations use the group code CON. The room block closes **May 28, 2015**. The hotel has plenty of free parking and a shuttle to the South Acton MBTA station.

Volunteers

ConCertino 2015 is just two months away, and the Con Com is excitedly gearing up for the con! We're sure many of you are as excited as we are, and a great way to share that is to volunteer. We are seeking helpers in several areas: Registration, Dealers room, Consuite, Sound, Setup and Cleanup. According to one of our registration volunteers from a previous ConCertino: "It is a great job if you are new to ConCertino, because everyone comes up to you and introduces themselves." To volunteer please contact [chair\[at\]concertino\[dot\]net](mailto:chair[at]concertino[dot]net)

Programming

ConCertino 2015 will feature a wide variety of fantastic filk programming, including concerts by our guests and others, performers' circles, workshops, theme circles, and lots and lots of open filking.

In addition to open filking, there will be one-shots, 2x10's, and other participatory performance formats (say that ten times fast!) that give you the chance to perform on our main stage. Please sign up at registration as slots will be limited.

Interfilk Auction

Once again, our friends from Interfilk will be on hand to auction off music, chocolate, jewelry and other goodies to raise funds to bring fine folks like Kari to ConCertino and other filk cons. Donations of items will be gratefully received and displayed in the Dealers' Room. Items receiving enough bids will go to the fabulous Voice Auction, featuring the infamous Interfilk Wenches. So donate, bid early, and bid often!

Songbook

The ConCertino 2015 program book will include a songbook section. Songs can be to existing or original tunes, and be accompanied with chords or notated (sheet) music. Songs on all filk-related topics (which means pretty much anything) are welcome. We can even transcribe notated music for you from a recording.

Please submit your songs to [songbook2015\[at\]concertino\[dot\]net](mailto:songbook2015[at]concertino[dot]net) as soon as possible, especially if you are interested in a transcription. The deadline for submissions is May 1, 2015.

Song Contest

In 1989, the movie *Back to the Future II* showed us visions of 2015. Well, that year has arrived, and the Con Com is still waiting for our Mr. Fusion-powered flight-capable DeLoreans. (Have you *seen* what traffic is like on the Mass Pike?) In the meantime, this year's song contest theme is "**Back to the Future**" To be eligible songs must not have been written before NEFilk 24 / Contata 7 (June 22, 2014).

Dealers' Room

We will have a Dealers' Room at ConCertino 2015. You need not deal in music, past vendors have included books and jewelry. Space is still available as of this progress report. A table for consignment sales will also be available for those with a small number of items to sell and no need for a full table. Interested dealers should please contact [dealers\[at\]concertino\[dot\]net](mailto:dealers[at]concertino[dot]net).

Directions to Hotel

The Holiday Inn Boxborough is located just off Interstate 495 at Exit 28. The address is 242 Adams Place, Boxborough, MA 01719.

BY CAR

From local areas: Find your best route to I-495. If coming off 495 South, turn right at the exit and then cross over the highway; if coming off 495 North, turn left. Take the next right onto Adams Place. Follow it almost to the end; the Holiday Inn will be on the left.

From the more distant south and west: Find your best route to I-90 east. There are two options from here:

1. Take Exit 10 to I-290 North. Follow 290 all the way to the end and exit left onto 495 North. Follow the "from local areas" directions above. This is shorter but goes through the middle of Worcester.
2. Take Exit 11A onto I-495 North and follow the "from local areas" directions above. This is longer but may avoid heavy traffic during peak hours.

COMMUTER RAIL

The hotel is about five miles from South Action Station on the MBTA Fitchburg commuter rail line. Schedules to and from North Station can be found at http://www.mbta.com/schedules_and_maps/rail/. There is a shuttle from the station to the hotel; you have to notify the hotel in advance of when you'll be arriving.

BY TRAIN OR BUS

Most trains and buses to Boston go to South Station. The commuter rail line, unfortunately, leaves from North Station. Your best connection is via the subway. Take the Red Line in the direction of Alewife (inbound) one stop to Downtown Crossing. Go upstairs to the Orange Line in the direction of Oak Grove and get off at North Station, which is the third stop. After exiting the turnstiles go through a tunnel and then up the stairs or escalator to the street; North Station will be right in front of you. There are elevators in the subway stations and a ramp to get into North Station.

Alternatively, you can take the Red Line from South Station to Porter Square and connect directly to the Fitchburg line. There are escalators and an elevator; also a LONG stairway (117 steps). You may want to check for service alerts at http://www.mbta.com/riders_tools/transit_updates/.

MBTA tickets go by the somewhat ominous names of "Charlie Card" and "Charlie Ticket." If you aren't a regular commuter you probably want a "Charlie Ticket," which can't be refilled but doesn't carry an initial cost, for the subway. Fares are \$2.65 each way with a "Charlie Ticket" and \$2.10 with a "Charlie Card" (free transfers within the subway). There are ticket vending machines that work with either cash or credit cards. More details on fares are available at http://www.mbta.com/fares_and_passes/subway/.

A separate ticket will be needed for the commuter train. South Acton is in Zone 6; a one-way ticket is \$9.25.

BY AIR

Boston's main airport is Logan International (BOS). The best way to connect to the transit system from there is to take the Silver Line express bus. The Silver Line stops at all terminals and goes to South Station. At South Station go downstairs to the Red Line level (free transfer, you're already behind the turnstile) and follow the directions for the subway above.

How to reach us

Mailing Address: MASSFILC, 18 Cottage Avenue, Arlington, MA 02474-5504

E-Mail: chair@concertino.net or (for general questions) concertino2015@concertino.net

Website: <http://www.concertino.net/>